


1

**School-aged Educators
Community of Practice**

Agenda

- Welcome and Introductions
- Mindfulness Moment
- Trauma Informed Early Learning Practices
- QCCN Updates
- Brainstorming
- Sharing learnings
- Questions and Connections
- ECCDC Resources and Services Available
- Upcoming Network Meetings
- Next Steps



2

Welcome and Introductions

- Welcome to the School-aged Educators' Community of Practice Network!
- Round table introductions sharing the program you work for, how long you have been with the program and what are you looking forward to this Winter.



3

Mindfulness Moment



mindfulmike.ca

<https://www.youtube.com/watch?v=1-lyzAJ9vTQ&t=3s>

4

Responding to Trauma-Related Behaviours in Early Childhood Settings



<https://www.youtube.com/watch?v=Z-bI0WEIQN8>

5

Getting started with Trauma Informed Practice



<https://www.youtube.com/watch?v=eW1V3wWyg54>

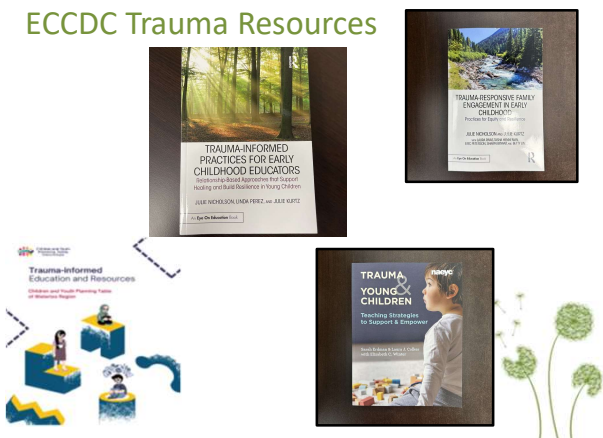
6

Trauma Informed Early Learning Practices

- Article – Building Resilience: Constructing ECE Knowledge of Trauma-Informed Practice in Early Learning Settings
- Edutopia <https://www.edutopia.org/article/creating-trauma-safe-spaces-in-school>
- Edutopia-video Getting Started with Trauma-informed Practices <https://www.youtube.com/watch?v=eWIV3wWygS4>
- NAEYC-Creating Trauma Sensitive Classrooms <https://www.naeyc.org/resources/pubs/yc/may2015/trauma-sensitive-classrooms>
- Video – Creating classrooms that build resiliency (understanding Trauma in Early childhood) https://www.youtube.com/watch?v=R-CQqh_gvLw

7

ECCDC Trauma Resources



8

Further Resources

- NAEYC - Creating Trauma-Sensitive Classrooms (pdf)
- Trauma Informed Education & Resources – Region of Waterloo (pdf)
- Trauma Informed-Care Workshops: What you need to know <https://cece-talk.ca/2023/02/trauma-informed-care-workshops-what-you-need-to-know/>
- Alberta Family Wellness Trust https://www.albertafamilywellness.org/resources/results?search-term=&topic_filter=trauma-informed-care
- Center for early childhood mental health consultation Georgetown Uni center for child & human dev. Tutorial module on recognizing &Trauma addressing in infants, YC & families <https://www.ecmhc.org/tutorials/trauma/index.html>

9

QCCN Updates

- If you completed QCCN institute between Nov 2015 & Aug 2023 you will need to complete mandatory speech & language training by 21st Oct 2024
- You will watch a 1-hour recorded webinar & complete the QCCN training evaluation to receive your certificate
- You will need to ask your supervisor to register you
- If you have any questions or would like further clarification, please reach out to Priyanka Tan, QCCN Coordinator, at ptan@eccdc.org or 905-646-7311 ext. 306.
- This year's QCCN training is being finalized. Please look out for E-blast for future details.



10

Brainstorming

- Round Table Discussion for Brainstorming Challenges and Solutions



11

Sharing Learnings

- Please feel free to share any photos or learning stories from your centre of Winter happenings.



12

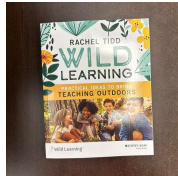
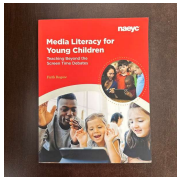
Further Questions and Connections

- Questions
- Connections



13

New ECCDC Resources



14

ECCDC Services Update

- Check us out online at www.eccdc.org or in person at **3550 Schmon Parkway, Thorold.**
- We are open! Monday, Friday and Saturday **8.30 a.m.- 4.30 p.m.** and Tuesday to Thursday **8.30 a.m.-9.00 p.m.**
- Please contact the ECCDC at **905.646.7311 ext. 304** if you are looking for materials.
- The ECCDC offers a resource lending library.
- We offer an online **EStore** of items including Personal Protective Equipment.
- The ECCDC designs and delivers professional learning opportunities in person and via webinar on a range of topics. Please visit www.eccdc.org to see what we have scheduled or to register for one of our sessions.



15

2024 Workplan

- What would you like to see for the Network for 2024?



16

Next Steps

- **Next Meeting** – 13th of May, 2024
- Look out for the network E-blast for network venue
- Minutes from the meeting will be sent out and posted on <https://www.eccdc.org/professional-learning/networks/school-age-network>



17



18
